

zortrax inventure

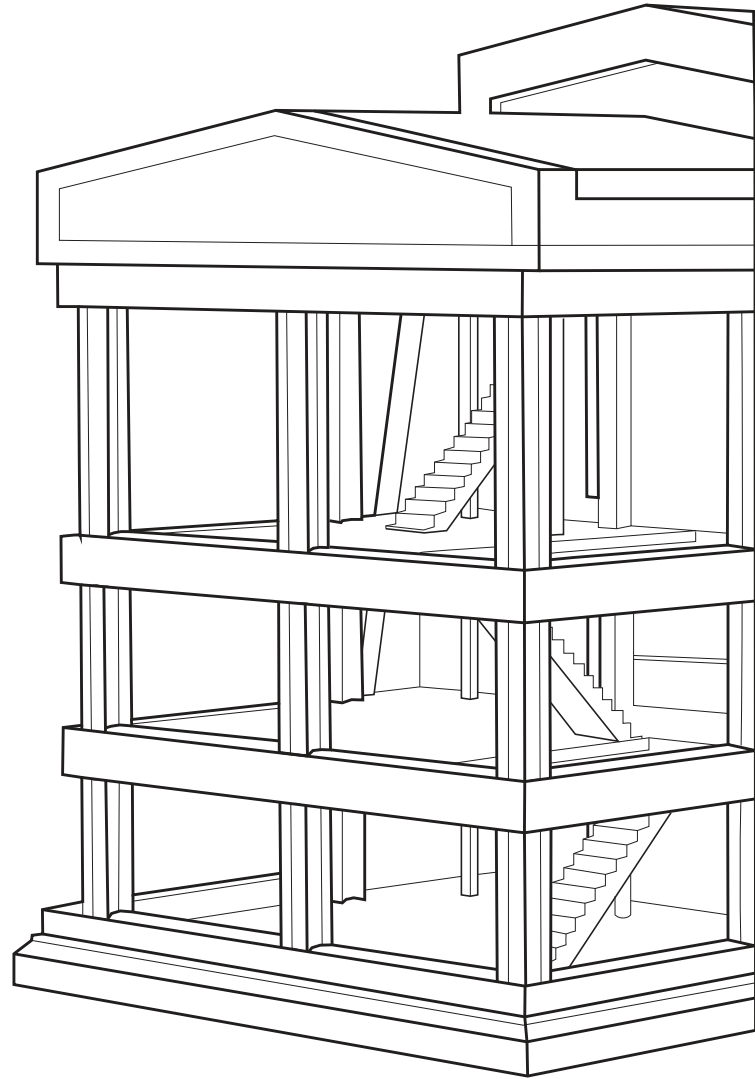
Smart professional



zortrax inventure

Smart solutions, professional results

Meet the Zortrax Inventure - the 3D printer most desired among professionals looking for **top quality at a reasonable price**. You will be pleased with the smart solutions it offers such as the **Dissolvable Support System, closed heated chamber, notification system** or dedicated software. Thanks to these features even your **most complex projects can now be brought to life with incredible dimensional accuracy and consistent repeatability**. Smartly and professionally.



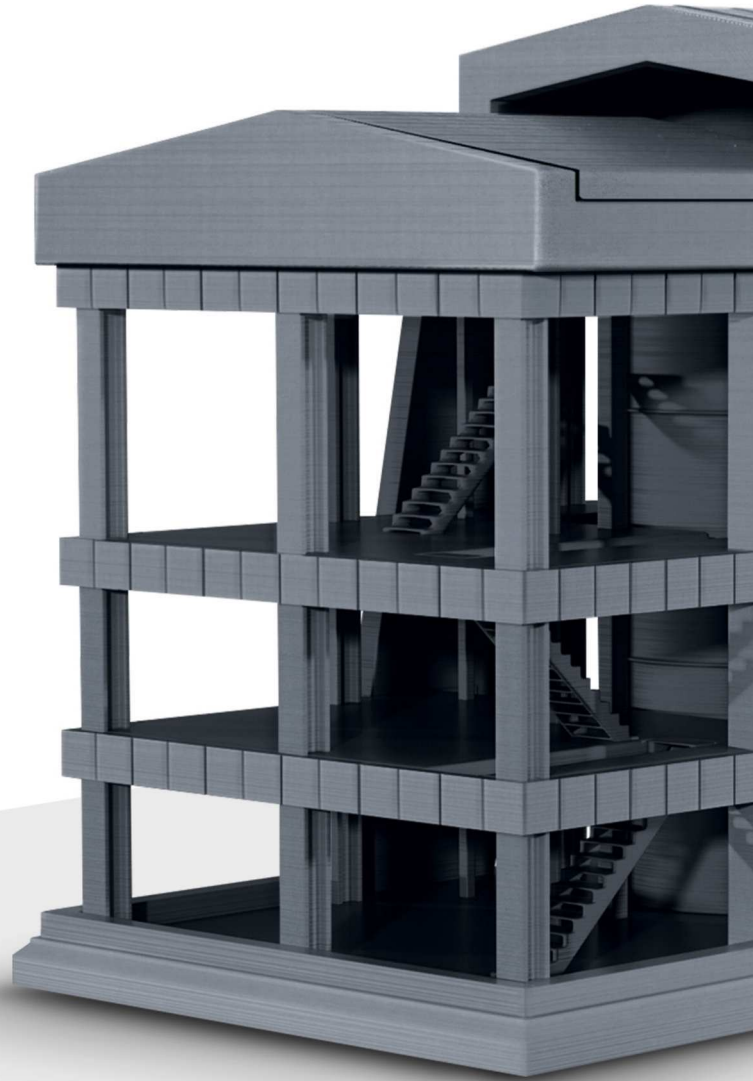
Stable printing temperature

Now all your printed objects are protected from warping or deformation. The Zortrax Inventure's **closed heated chamber provides the constant temperature for your models during the printing process.** Thanks to this feature **you don't have to worry about external factors** such as room temperature, which could affect the properties of the material during the printing process.



Functional model of a differential mechanism.

The dissolvable support material allows you to print a moving mechanism without the need to put together individual parts.



Model without support printed in one piece using the Zortrax Inventure



Fast and easy support removal

Zortrax introduces the **Dissolvable Support System (DSS)**. Starting now you can print complex parts or even entire moving mechanisms in one print. DSS is an **easy-to-use support removal system based on water and soluble material**. All you need to do is put your object into water for a few hours and watch the support disappear entirely, leaving a **smooth shape without any residue** - a process that is time saving and hands-free.

Model with Z-SUPPORT material

Material for accurate testing

This professional material in cartridge is designed specifically for the Zortrax Inventure 3D printer. Its mechanical properties make **Z-ULTRAT Plus thermoplastic perfect for creating detailed models and complex shapes.**

With Z-ULTRAT Plus you can print end-use parts, functional prototypes or other objects that require **high precision and durability.**

It can also be used for accurate **pre-production testing** because it simulates the features of a final product.



Conceptual model of a part from a camera lens. The Z-ULTRAT Plus material allows to mechanically finish and chemically treat the model's surface.



Functional prototype of the plastic parts of a garden hose.

Thanks to LPD Plus technology particular parts have high dimensional accuracy, so they can fit and work together in one mechanism.



Greater control

What is the smartest thing about our smart and professional 3D printer? It's the 3D printer's ability to communicate and interact with the user. The Zortrax Inventure has a **built-in notification system** that prevents errors and gives you **full control of the printing process**.



Easy to plug in cartridges

Having 3D printing materials in a cartridge makes the **replacement easier and faster**. This solution also allows **better control of material consumption levels**. Each cartridge has a special chip which sends information such as material type, color and consumption level to the 3D printer.



Your next best investment.

Zortrax 3D printing solutions will give your company competitive edge on the market:

- accelerating and facilitating product development
- significantly lowering the costs of prototyping
- increasing production flexibility
- allowing easy product customization

Discover Zortrax Inventure at www.zortrax.com

Printing

Technology	LPD Plus - advanced technology with DSS system
Build volume	140 x 140 x 140 mm 5.5 x 5.5 x 5.5 in
Resolution	90-400 microns
Material container	Cartridge
Wall thickness	Minimal: 400 microns Optimal: 800 microns
Resolution of single printable point	400 microns
Material diameter	1.75 mm (0.069 in)
Nozzle diameter	0.3 mm (0.011 in)
Minimum single positioning	1.5 microns
Positioning precision (X/Y)	1.5 microns
Z-axis single step	1.25 microns

Temperature

Extruder maximum temperature	380° C (716° F)
Heated chamber	Yes
Chamber maximum temperature	90° C
Ambient operation temperature	15°-35° C (60°-95° F)
Storage temperature	0°-35° C (32°-95° F)

3D Printer

Support	Dissolvable - printed from a different material than the model
HEPA filter	Yes
Material consumption sensor	Yes
Chip with information about material (type, color, consumption)	Yes
Extruder	Single with double nozzle
Connectivity	SD Card (included)
Available materials	Z-ULTRAT Plus, Z-SUPPORT

Electrical

AC input	110/240V ~ 2 A 50/60 Hz
Power requirements	24 V DC @ 11 A
Power consumption	160W

Software

Software bundle	Z-SUITE
File types	.stl .obj .dxf
Supports	Mac OS X / Windows XP and newer versions

Physical dimensions

350 x 350 x 400 mm
13.7 x 13.7 x 15.7 in

zortrax

Office:
office@zortrax.com

Sales department:
sales@zortrax.com

Technical support:
support@zortrax.com

zortrax.com | Find a local Reseller: zortrax.com/resellers

Presented offer and product's details may be changed.

©2015 Zortrax S.A. All rights reserved.

"Zortrax", "Zortrax M200", "Zortrax Inventure", "Z-ABS", "Z-ULTRAT", "Z-HIPS", "Z-GLASS",
"Z-ULTRAT Plus", "Z-SUITE" are registered trademarks of Zortrax S.A.